

INDIAN HARBOR YACHT CLUB

2018 CLASSIC YACHT REGATTA

SEPTEMBER 15, 2018

SAILING INSTRUCTIONS

1. RULES

- 1.1. The regatta will be governed by the rules as defined in the current *The Racing Rules of Sailing (RRS)*.
- 1.2. For the purpose of rules 14 and 44.1(b), any contact between boats shall be considered serious damage. This changes rules Part 2 Preamble, 36(b), 44.1(b), 60.3(a)(1) and 61.1(a)(4).
- 1.3. All yachts shall observe the change of the definition of “Keep Clear” and rules changes noted in NOR 2 Rules Changes.

2. NOTICES TO COMPETITORS

- 2.1. Notices will be posted on the Official Notice Board located in the main lobby at IHYC.
- 2.2. The race committee intends to broadcast pertinent race information on VHF channel 05A. Failure of such information to be given or received shall not be grounds for redress. This changes rule 62.1(a).

3. CHANGES TO SAILING INSTRUCTIONS

Any changes to the sailing instructions will be posted before 0900 on Saturday, September 15, 2018.

4. SIGNALS MADE ASHORE

- 4.1. Signals made ashore will be displayed on the main flagpole at IHYC.
- 4.2. When code flag “AP” is displayed ashore, “1 minute” is replaced with “not less than 60 minutes” in the race signal “AP”.

5. SCHEDULE OF EVENTS AND RACE

- | | | | |
|-----|----------------------------------|-------------|--|
| 5.1 | Friday, 9/14/18: | 1600 – 1900 | Boat arrivals, check in, and Welcome Party |
| | Saturday, 9/15/18 | 0900 – 1000 | Last minute check-in |
| | | 1000 | Mandatory Competitors’ Meeting |
| | | 1100 | Harbor Start |
| | | 1155 | First Warning Signal |
| | | 1800 | Cocktails and Awards Dinner |
| 5.2 | All classes shall sail one race. | | |

6. CLASS FLAGS

- 6.1. Class flags will be numeral pennants.
- 6.2. Class assignments will be shown on the final scratch sheet, which will be available by 0900 on Saturday 9/15/18 online at www.yachtscoring.com and through www.indianharboryc.com. The final scratch sheet and starting order will also be distributed at the competitors' meeting and posted on the Official Notice Board. Owners/skippers are reminded to use the final scratch sheet as the preliminary scratch sheet is subject to change.
- 6.3. All competitors shall fly their class flag as designated on the final scratch sheet. Flags shall be flown from the permanent backstay approximately six feet above the deck. Yachts with no permanent backstay shall fly their class flag from another conspicuous location.
- 6.4. Classes may be started together. This will be indicated on the final scratch sheet along with starting order and assignment to the Long or Short Course.

7. RACING AREA

The racing area will be in Captain Harbor and in Long Island Sound, as shown in Addendum 3 - Racing Areas. Figure 2 in Addendum 3 - Racing Area shows three red exclusion zones that shall not be used while racing. Further detail will be provided at the Competitors Meeting at 1000hrs as described in SI 5.1.

8. COURSES AND MARKS

- 8.1. Marks are described in Addendum 1 - Racing Mark List.
- 8.2. Yachts will sail either a Long Course or a Short Course. Long and Short course assignments will be given on the final scratch sheet.
- 8.3. A list of potential courses is given in Addendum 2 - Course List. Each course is designated by a single letter, example: Course A, Course B and so on. All courses start inside Captain Harbor, proceed to a yellow inflatable tetrahedron anchored to windward of the race committee signal boat (mark Z) and then proceed in the order indicated around government marks in Long Island Sound in the vicinity of the mid-Sound buoy (32A) and the Captain Islands before finishing at mark M as described in SI 12 Finish Line. Each course shows the order in which marks are to be passed and which side the marks are to be left or rounded, except for mark Z and mark A when it is the first mark after mark Z. The race committee will announce which sides mark Z and mark A are to be rounded prior to the first warning for the first class to start.
- 8.4. Government marks that are not marks of the course may be passed on either side at the sole discretion of the skipper/owner.
- 8.5. Courses distances will be determined by the race committee and shall not be subject to redress.
- 8.6. No later than five minutes before the first warning signal, the race committee will designate the Long and Short courses by displaying on the signal boat course board the course letter underneath L for Long Course and S for Short Course.

9. PRE-START IDENTIFICATION AND RETIREMENT

- 9.1. Prior to the first warning signal, all competing yachts shall sail past the stern of the race committee boat on starboard tack and announce their yacht name, sail number and how many crew aboard.
- 9.2. A yacht retiring from the race shall inform the race committee on VHF channel 05A.

10. STARTING PROCEDURES

- 10.1. Races will be started in accordance with rule 26. There will be a five minute interval between a start and the warning signal for the next division or class. This modifies rule 26.
- 10.2. The Initial Starting Sequence will be described on the final scratch sheet.
- 10.3. The race committee will signal individual recalls in accordance with rule 29.1 and will attempt to hail boats that are OCS on VHF channel 05A. A failure to hail, order in which hails are made or a competitor not hearing her hail will not be grounds for redress.

11. STARTING LINE

The starting line will be between an orange flag on the race committee signal boat and an orange inflatable tetrahedron. The starting line will be inside Captain Harbor.

12. FINISH LINE

The finish line for all boats will be between Captain Island Red Nun 'N2' (Race Course mark 'M') off the western end of Great Captain Island and an orange flag on the signal boat. The signal boat will display a race committee flag and an IHYC burgee.

13. TIME LIMITS

All yachts must finish the race no later than 1700hrs. Those yachts not finishing within the time limit will be scored Time Limit Expired (TLE) and be given points equal to the number of boats finishing in her fleet plus two points, but not more than Did Not Finish (DNF).

14. PROTESTS

- 14.1. A protesting yacht shall notify the race committee of its intent to protest via VHF channel 05A after crossing the finish line, upon retiring or at the time of the time limit expiring.
- 14.2. Protests shall be filed at the IHYC Front Desk as soon as possible following completion of the race but no later than one hour after the last boat's finishing time or the signal boat docking time, whichever is later. Protest hearings, if any, shall be scheduled and heard at a time and place designated by the protest committee.
- 14.3. At the first opportunity after crossing the finish line, a yacht which has exonerated herself shall report that fact to the race committee via the VHF channel 05A and identify the boat infringed against. This modifies rule 44.2.

15. SCORING AND TIME ALLOWANCE

Results for handicap classes will be based on CRF MK II ratings and course distances as

determined by the race committee. If applicable, one-design classes, and the Catboat Level Division will be scored within their class provided there is a minimum of five boats per class.

16. PRIZES

- 16.1. Racing awards will be presented at the Saturday Awards Dinner. Awards for first, second and third place finishes will be presented to all classes.
- 16.2. The Frank Bowne Jones Founders Cup will be awarded for the fastest corrected time by a classic yacht on the Long Course.
- 16.3. The Spartan Trophy will be awarded for the fastest corrected time by a yacht other than the Frank Bowne Jones Founders Cup winner on the Long Course.
- 16.4. The Victory Trophy will be awarded for the fastest corrected time by a yacht on the Short Course.

17. RADIO USE

A race communications channel will be confirmed at the competitors' meeting, and is planned to be 05A. The race committee will make courtesy broadcasts to inform competitors regarding postponements, general recalls and other race-related information. The absence, inaccuracy or lack of timeliness of such broadcasts shall not be grounds for granting redress. The race committee will be under no obligation to acknowledge or answer radio communications except to acknowledge retirement, protests or reports of exoneration.

18. SAIL AND EQUIPMENT LIMITATIONS

Sail and equipment limitations shall be as stated in the Notice of Race for all classes.

19. RESPONSIBILITY FOR SAFETY

As a condition of the participation of any boat in any race or related activity sponsored by the Indian Harbor Yacht Club: the owner, helmsman and each crew member agrees that the safety of the boat and the crew and the decision whether or not to start or continue to race is solely their responsibility, and each of them waives all claims which he or she, or any heir, representative, successor or assignee, may have against the Indian Harbor Yacht Club and any of its officers, trustees, members committees, employees or agents, arising out of or in any way connected with participation in such race or activity. Responsibility for evaluating wind, sea and weather conditions rests with each competitor as does the responsibility for the safe condition and operation of their boat, including safety equipment.

20. CONTACTS

Indian Harbor Yacht Club, 710 Steamboat Road, Greenwich, CT 06830

(main) 203-869-2484, (fax) 203-869-0135

Event Chairs: Shelia and Ted Graves - noreaster1926@yahoo.com

Front Desk - Additional Dinner Reservations: frontdesk@indianharboryc.com

Marine Department - Mooring Reservations: Dustin Bruce - dbruce@indianharboryc.com

Waterfront Director - General Inquiries: Joel Labuzetta - waterfront@indianharboryc.com

Addendum 1 - Racing Mark List

Mark	Description of Mark	Approx. Location
A	Gong G"1"	0.5 NM E of Little Captain Island
B	Bell R"32A"	2.3 NM SSE of Greenwich Point
C	Bell R"32"	0.8 NM S of Shippan Point
D	Bell R"28C"	3.4 NM N of Eatons Neck
E	Can C"13"	0.9 NM N of Eatons Neck
F	Gong G"15"	0.9 NM NNE of Lloyd Point
G	Bell G"17"	1.4 NM N of Rocky Point
H	Gong C"19"	0.6 NM N of Oak Neck Point
J	Gong G"21"	0.3 NM N of Matinecock Point
K	Nun "40A"	0.3 NM SSE of Peningo Neck
L	Bell R"36"	1.0 NM SW of Great Captain
M	Nun N"2"	0.2 NM SSW of Great Captain Island
N	Nun N"2"	0.4 NM ENE of Great Captain Island

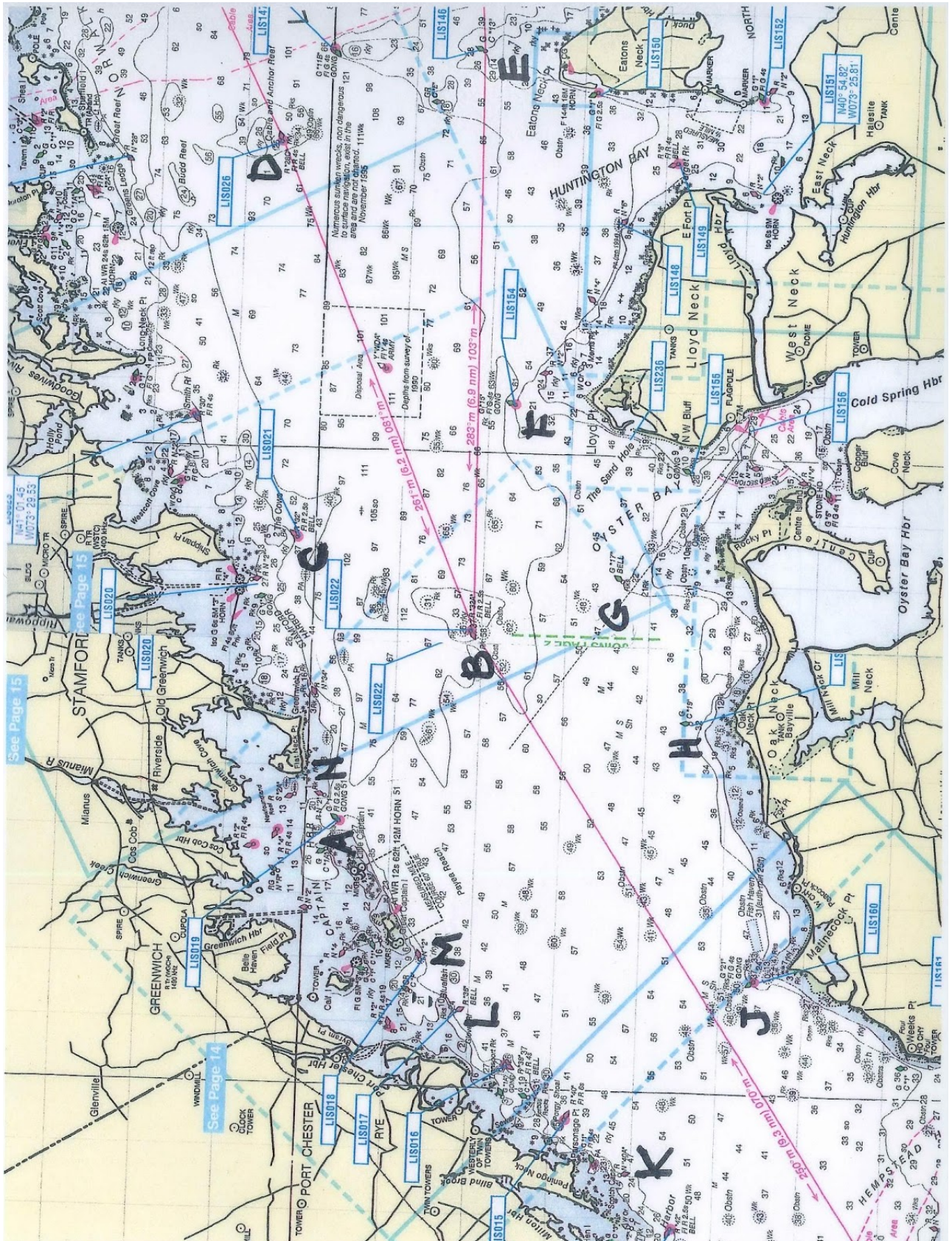
Addendum 2 - Course List

*() - side for rounding will be announced on VHF channel 05A prior to warning signal

Course	Rounding Order Of Marks	Distance (NM)
A	Z() Np Cs Bs As Cs Bs	18.4
B	Z() Np Cs Gs Bp	12.3
C	Z() Np Cs Bs Ap	10.2
D	Z() A() Bp Ap	8.0
E	Z() Np Cs Fs	12.0
F	Z() A() Gp Bp	11.1
G	Z() A() Bs Gs	9.7
H	Z() A() Bp Ap Mp Bp Ap	16.6
I	Z() A() Fp Cp	12.2
J	Z() Np Cs Bs As Cs	17.9
K	Z() As Mp Cp	13.8
L	Z() Np Cs	9.7
M	Z() A() Bp Cp Ap Bp Cp	19.9
N	Z() A() Gp Cp Ap	14.4
O	Z() A() Gp Ap Bp Ap	17.0
P	Z() A() Bs Gs Ap	11.7
Q	Z() Np Cs Fs Ap	14.2
R	Z() A() Fs Ap	13.4
S	Z() N() Fp Cp	14.5
T	Z() Np Cs Ap Bs	13.9
U	Z() As	2.6
V	Z() A() Hp Fp Gs Bp	17.1
W	Z() A() Bp Cp	10.7

Addendum 3 - Racing Area

Figure 1



Addendum 3 - Racing Area (continued)

Figure 2

